

LASERFLUX

Laser cleaning solutions

The future of Industrial Cleaning



www.laserflux.com

LASER FLUX

Laser cleaning solutions



- Introduction
- Laser Cleaning Explained
- In-Line Laser Cleaning Solution
- LM-X-C Pushcart
- LM-X-C Trolley
- Laser Profiling Explained
- In-Line Laser Profiling Solution
- LM-X-T Pushcart
- LM-X-T Trolley
- Laser Engraving Explained
- Unique Features
- Benefits of Laser Cleaning
- Additional Services
- Why Laserflux?
- Contact us

Content

Dear
Customer

At Laserflux, we transcend conventional cleaning methods by introducing a new era of efficiency and precision through cutting-edge laser cleaning and laser profiling solutions. We take pride in redefining the meaning of the concept 'clean', offering solutions that not only meet but exceed the evolving demands of our clients.

Our Core Values: Innovation, Sustainability, and Excellence

We are driven by a commitment to innovation, sustainability, and delivering outstanding results. Our laser cleaning and laser profiling systems not only represent a technological leap but empower businesses with streamlined processes and reduced environmental impact.

Applications of Our Solutions:

Whether it's industrial cleaning, restoration of historical heritage, or optimizing manufacturing processes, our laser cleaning and laser profiling solutions offer versatile applications that redefine industry standards.

Explore our brochure to discover more about our product line and how our laser cleaning and laser profiling solutions can elevate your business to new heights.

Thank you for considering Laserflux. We look forward to partnering with you to create a cleaner, more innovative future.

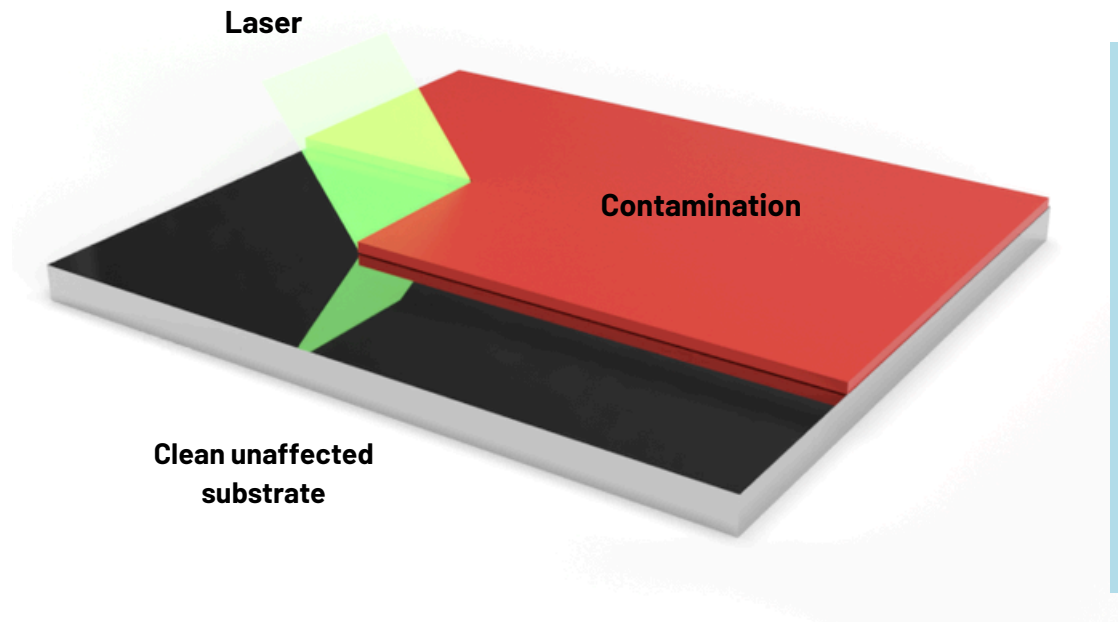
Best regards,

Tom van Cappellen
CEO Laserflux

How does laser cleaning work?

In laser cleaning, a laser source emits short pulses of intense laser light. These controlled pulses are directed onto the surface to be cleaned. The energy of the laser is absorbed by the contamination on top, causing an instant vaporization or sublimation.

This removes the contamination from the surface.



Laser Cleaning

Laser Cleaning inspiration

Contaminations

- Oxidation layers (rust)
- Paint and coatings
- Food remains
- Teflon and other anti stick coatings
- Glue
- Grease and oil
- Plastic remains (PE, rubber, PVC, ...)
- Ink
- Weld slag
- ...

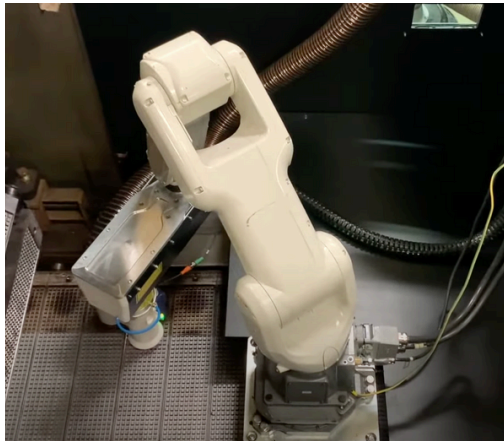
Materials

- Steel (also chrome coated)
- Stainless steel
- Cast iron
- Aluminum
- Titanium
- Copper
- Woods
- Composites
- Stone (non-porous)
- Types of glass
- ...

Applications

- Molds
- Baking trays and industrial ovens
- De-rusting of tubes and construction elements
- Tank cleaning
- Cleaning of reactor vessels
- Paint stripping
- Pre and post weld cleaning
- Turbine cleaning
- Surface preparation and profiling
- Restoration of monuments, statues and buildings
- Glass decoating
- ...

Introducing our in-line laser cleaning solution for seamless integration into your production line. This cutting-edge solution combines the precision of laser cleaning technology with the versatility of robotic automation, ensuring optimal performance and efficiency throughout your manufacturing operations. With our custom automated in-line laser cleaning solution, you can optimize your manufacturing process by incorporating efficient and reliable laser cleaning capabilities directly into your production line. Increase throughput, improve quality, and reduce costs with a customized solution designed to meet your specific needs.



In-line Cleaning Solutions



SCAN ME



The **LMX-C Pushcart** is designed to clean large surfaces in an industrial environment, with ease of transportation in mind. The fiber cable can be up to 50 meters long so they don't need to be moved. Also, the pushcarts are equipped with a water cooled laser source. Our laser cleaning pushcarts are one of the most powerful and compact laser cleaning machines in the world.

Laser Power options	300W - 500W - 1000W - 2000W - 3000W
Dimensions	1255 x 804 x 1702 mm / 49.11 x 31.65 x 67 inch
Weight laser unit	350 - 650 kg / 770 - 1450 lbs
Weight laser head	2 - 3 kg / 4.5 - 6.5 lbs
Fiber cable length	Up to 50 meters / 164 ft
Pulse frequency	10 - 100 kHz
Pulse type	Top hat
Pulse duration	25 - 100 ns
Power supply	3x 400V or 3x 480V

**Dimensions of 2000W & 3000W on request*



LMX-C Pushcart

300W/500W/1000W/2000W/3000W





The **LMX-C Trolley** is a compact mobile laser cleaning machine. The Trolley has an air cooled fiber laser source with very low energy consumption, which can easily be supplied by a small generator on site. The device itself can easily be moved or lifted onto scaffolds.

This compact machine reaches cleaning speeds up to 5 m² per hour, which is more than sufficient for many applications.

Laser Power options	100W - 200W
Dimensions	400 x 500 x 1181 mm / 15.75 x 19.69 x 46.5 inch
Weight laser unit	40 - 60 kg / 85 - 130 lbs
Weight laser head	1,5 - 2 kg / 3 - 4.5 lbs
Fiber cable length	Up to 5 meters / 16.4 ft
Pulse frequency	15 - 200 kHz
Pulse type	Top hat/Gaussian
Pulse duration	Up to 200 ns
Power supply	110V or 230V



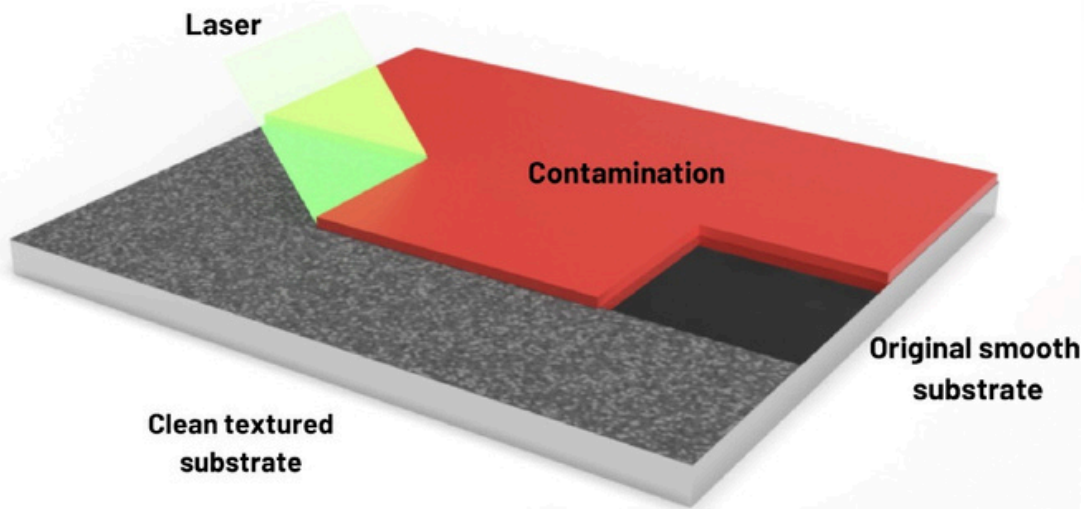
LMX-C Trolley

100W / 200W



What is laser profiling?

Laser profiling, also known as laser surface texturing or structuring, is a process that involves using laser technology to create specific patterns, textures, or microstructures on the surface of a material. This surface modification technique enables precise control over surface characteristics, allowing for customization of properties such as friction, adhesion, wettability, optical properties, and more. A laser profiling laser source has the ability to clean and create a profile in 1 movement.

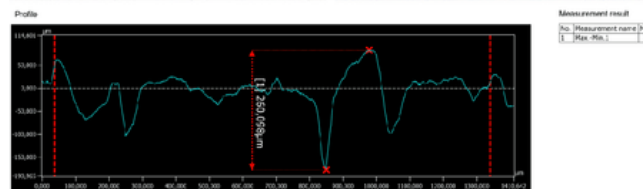
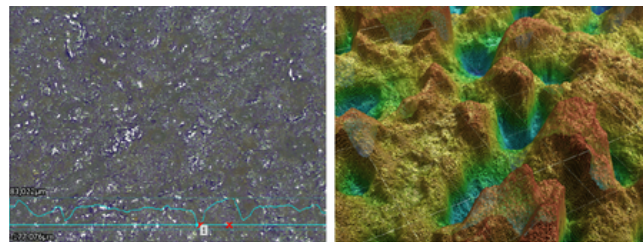
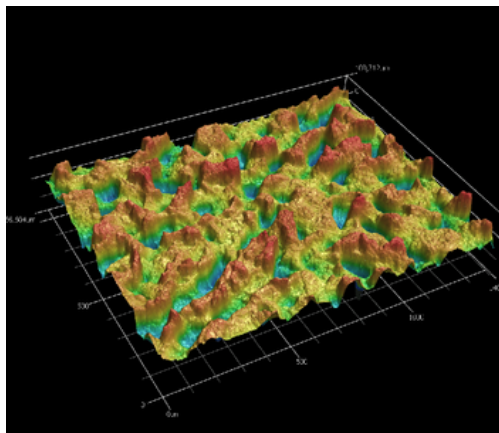
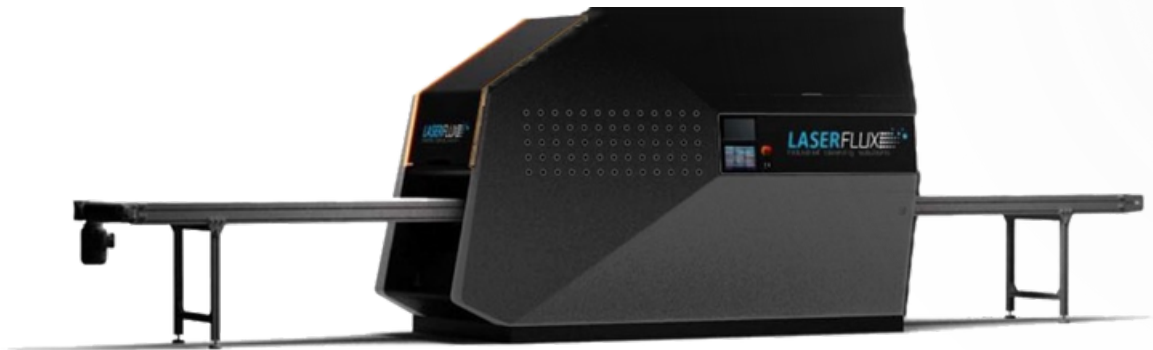


Laser Profiling

Laser profiling applications:

- Functional requirements
- Aesthetic Enhancement
- Surface modification
- Profiling of surfaces
- Repair and Restoration
- Research & Development

An integrated automatic laser profiling solution combines laser technology with automated systems to create textured surfaces on various materials. It offers a solution for several industries to take the step to surface texturing, combining precision, efficiency, versatility, and cost-effectiveness to meet the demands of modern manufacturing environments.



Measurement result

No.	Measurement name / Area
1	Max./Min.

In-Line Profiling Solutions



SCAN ME



The **LMX-T Pushcart** is a mobile laser profiling machine. At first glance, this machine appears quite similar to his laser cleaning twin-brother. However, its purpose is entirely different by enhancing the aesthetics and functionality of surfaces through laser-induced profiling and removing contaminants in the same movement.

Laser Power options	500W - 1000W - 2000W - 3000W
Dimensions	1255 x 804 x 1702 mm / 49.11 x 31.65 x 67 inch
Weight laser unit	300 - 550 kg / 650 - 1200 lbs
Weight laser head	2 - 3 kg / 4.5 - 6.5 lbs
Fiber cable length	Up to 50 meters / 164 ft
Pulse frequency	10 - 100 kHz
Pulse type	Gaussian
Pulse duration	20 - 500 ns
Power supply	3x 400V or 3x 480V

**Dimensions and laser head weight of 2000W & 3000W on request*



LMX-T Pushcart

500W/1000W/2000W/3000W





The **LMX-T Trolley** is a compact mobile laser profiling machine. This machine is easy to transport from one location to another, allowing for on-site laser profiling operations. The machine can access tight spaces and areas that might be challenging to reach with larger equipment.

Laser Power options	50W - 100W - 200W - 300W - 500W
Dimensions	400 x 500 x 1181 mm / 15.75 x 19.69 x 46.5 inch
Weight laser unit	40 - 60 kg / 85 - 130 lbs
Weight laser head	1,5 - 3 kg / 3 - 6.5 lbs
Fiber cable length	Up to 5 meters / 16.4 ft
Pulse frequency	2 - 4000 kHz
Pulse type	Gaussian
Pulse duration	20 - 500 ns
Power supply	110V or 230V



LMX-T Trolley

50W/100W/200W/300W/500W

Laserflux introduces its cutting edge In-line and on the fly Laser Engraving Solutions, a technology designed to redefine precision and efficiency in surface marking. Our laser engraving solutions are engineered for industries demanding the highest standards of accuracy and detail, offering unmatched customization and quality.

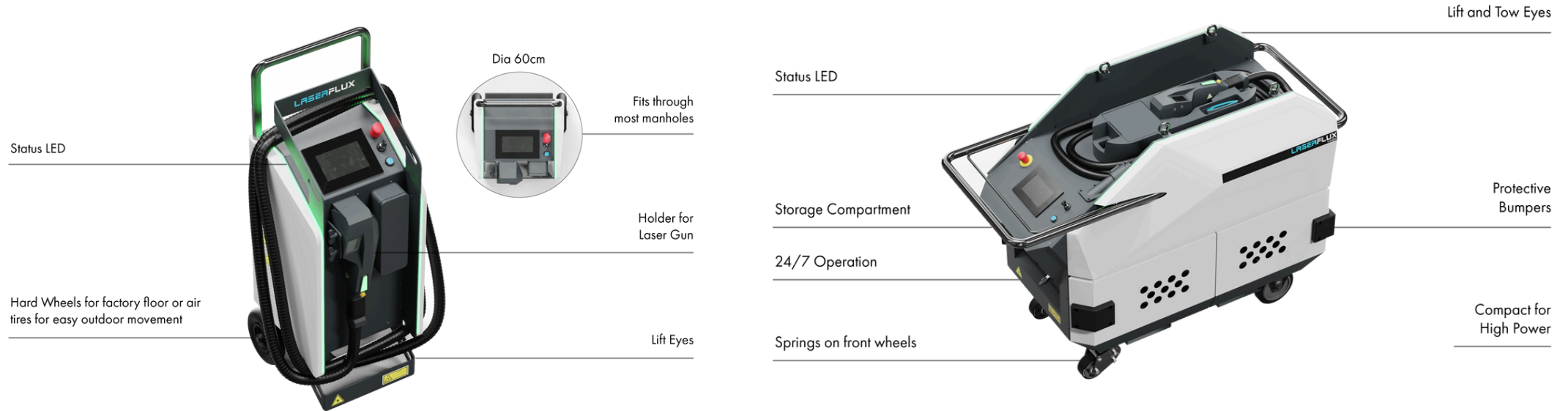
The application of our In-line Laser Engraving extends across various sectors, including electronics, automotive, jewelry, food, and tooling. By offering a non-contact, chemical-free process, we ensure that your products are not only marked but also preserved in their pristine condition throughout the engraving process.



In-Line Engraving Solutions

1. **Precision and control:** Laser engraving allows for precise targeting of specific areas on a surface, making it ideal for making marks without affecting the surrounding material.
2. **Environmentally friendly:** Laser engraving does not require the use of consumables. This eliminates the generation of secondary waste. The lack of debris allows you to work in delicate environments.
3. **Versatility:** Laser engraving can be used on a wide range of materials, including metals, stone, wood, ceramics, composites, and more.
4. **Customization:** Each project is unique, and our In-line Laser engraving solutions are designed to meet your specific requirements. With the ability to adjust texture depth and pattern on the fly, our technology ensures that your surfaces are not just engraved but tailored to perfection.





Our mobile laser cleaning and laser profiling machines are designed to provide operators with a familiar and intuitive experience, allowing them to focus on their tasks. Our machines come with a range of unique features tailored to each laser:

- Integrated Process LED
- Compact high power lasers
- Fully equipped for lifting, ensuring easy transportability, and are built to withstand challenging environments.

The unique features of our Laser Machines

The laser gun of our mobile laser cleaning and laser profiling machines is designed to be as tough, light, and ergonomic as possible, allowing comfortable all day use. Our laser guns come with a range of unique features tailored to each laser:

- Super light 2D laser cleaning gun
- Ergonomic Handle (Options available)
- Integrated Proces LED
- Integrated display on laser head (optional)
- Easy lens change system on laser gun, with infinite amount of focal lenses possible
- Effortless changing of protective window without tools
- 4 mounting brackets
- Detachable suction nozzle for air extraction system
- Touchscreen display with Laserflux software and Intuitive control buttons

Ergonomic Handle
Options Available

Integrated Display

Numerous Mounting Brackets

Available in 1D or 2D Optic

Status LED

Proces LED

Rail for
Suction Nozzle

Lightweight between 2-3kg
Depending on power preference



Unique Features of our Laser Gun

- 1. Non-contact method:** Laser cleaning is a non-abrasive and non-contact process. This helps in preventing damage to delicate surfaces, such as historical artifacts, electronic components, or precision machinery.
- 2. Precision and control:** Laser cleaning allows for precise targeting of specific areas on a surface, making it ideal for removing contaminants without affecting the surrounding material.
- 3. Environmentally friendly:** Laser cleaning does not require the use of consumables. This eliminates the generation of secondary waste. The lack of debris allows you to work in delicate environments, i.e. above and around waterways.
- 4. Safety:** Laser cleaning is safer for operators and requires limited PPE. The use of lasers reduces the risk of accidents or injuries.
- 5. Cost-effective:** The rather high investment cost of laser cleaning is compensated by a long life time of limited maintenance, no need for consumables, and reduced downtime. It also provides a high longterm ROI.
- 6. No surface damage:** Laser cleaning can remove contaminants from surfaces without causing damage such as scratching, etching, or warping, which typically occur with some traditional cleaning methods.
- 7. Versatility:** Laser cleaning can be used on a wide range of materials, including metals, stone, wood, ceramics, composites, and more. It is effective for removing various types of contaminants, such as rust, grease, paint, oxide layers, and organic residues, making it a versatile solution for diverse cleaning applications.

The 7 Benefits of Laser Machines

R&D

Our team of skilled engineers work with you to provide tailored solutions. With a wealth of expertise, we offer comprehensive assistance in concept development, prototype testing, and optimization. From the inception of your idea to the final implementation, our R&D support ensures that you stay at the forefront of laser technology. Partner with us to transform your vision into reality, as we pave the way for the next wave of breakthroughs in laser applications.



Service Cleaning

You don't have a permanent need for a laser cleaning machine? Or you want to evaluate if laser cleaning is the right solution for your application?

Our Cleaning Squad is perfect for you. We come to your project or company and perform the cleaning on site at a fixed hourly rate.

You prefer to have us collect the parts and do the cleaning on our premises? No problem! Within days, or even 24 hours, the parts can be back at your doorstep.

Rental

Do you prefer to do the cleaning work by yourself or do you have a team of technicians who are comfortable working with machines?

You might consider just renting one of our devices. Rentals are possible from 1 day. Worldwide shipment available.



Additional Services

1. Quality Products & Services: We offer top-quality products & services that meet or exceed industry standards.

2. Customer Satisfaction: We prioritize customer satisfaction above all else. From the initial inquiry to after-sales support, we strive to provide exceptional service, promptly addressing any concerns or queries customers may have.

3. Innovation and Technology: Our company is at the forefront of innovation, continuously researching and adopting cutting-edge technologies to improve our products & services.

4. In-House automation and robotization team: We understand that every customer's needs are unique. That's why we offer customization and robotization options, allowing customers to tailor our products & services to their specific requirements, ensuring a perfect fit for their needs.

5. Reliability and Trustworthiness: Our company has built a reputation for reliability and trustworthiness. Customers can rely on us to deliver on our promises, meet deadlines, and provide consistent performance, fostering long-term relationships built on trust.

6. Exceptional Support: We provide comprehensive support throughout the customer journey. Whether it's technical assistance, product training, or troubleshooting, our dedicated support team is always available to assist customers, ensuring a smooth and hassle-free experience. The remote access service allows us to service you wherever you are.

7. Environmental Responsibility: We are committed to environmental sustainability and incorporate eco-friendly practices into our operations. Customers can feel good about choosing a company that prioritizes environmental responsibility and contributes to a greener future.

8. Proven Track Record: With a proven track record of success and satisfied customers, our company stands as a reliable and reputable choice in the industry. Customers can trust our expertise and experience to deliver results that exceed their expectations.

Why
Choose
Us?

Unlock the power of precision with our state-of-the-art laser cleaning solutions. Whether you're in manufacturing, food, automotive, aerospace, or any industry that demands pristine surfaces, we have the expertise to elevate your standards.

Take the first step towards unparalleled cleanliness and surface perfection. Contact our team now for a consultation, demonstration, or to discuss how our laser cleaning technology can benefit your business.



+32 289 774 89



www.laserflux.com



contact@laserflux.com



Benedestraat 175, 1851 Humbeek (Belgium)



SCAN ME

Let's redefine laser cleaning

LASERFLUX

Laser cleaning solutions